

# Water-sediment interactions during infiltration of monovalent partial desalinated water into different dune sediments

Mareike Schloo<sup>1</sup>, Laura Bräunig<sup>1</sup>, Victoria Burke<sup>1</sup>, Gudrun Massmann<sup>1</sup>, Janek Greskowiak<sup>1</sup>

<sup>1</sup>Department Hydrogeology and Landscape Hydrology, Institute for Biology and Environmental Science of the Carl-von-Ossietzky Universität of Oldenburg, Uhlhornsweg 84, D-26129 Oldenburg, Germany

## Motivation and study site Langeoog

- Increasing global freshwater demand – need for groundwater protecting techniques
- Langeoog: 20 km<sup>2</sup>, Holocene [1] barrier island in east Frisia, North Sea/Germany [2]
- Freshwater lens acts as the island's drinking water source [2]
- Higher water demand during summer months (tourism) [3]
- Freshwater resource endangered by erosion and flooding [2]
- Drinking water production area (Pirolatal) characterized by permeable sands (without soil development) [2]

## Material and experiment

- Sediment extraction of dune sediments at three different site locations (in Pirolatal) → White dune (WD), Grey dune (GD), Brown dune (BD)
- Column experiments with salinated sediment of the White and Brown dune
- Analysing the role of the different sediment characteristics on hydrogeochemical processes during infiltration with artificial monovalent partial desalinated water (PDW)

Table 1: Soil characteristics of the three different dune sediments.

Parameter	White dune	Grey dune	Brown dune
pH <sub>current</sub>	9.24	8.05	5.83
pH <sub>potential</sub>	7.44	7.14	3.73
Electric Conductivity [µS/cm]	36.43	16.11	20.06
Carbonate content [%]	7.2	0.12	0.07
Organic content [%]	0.54	0.17	0.61
Texture [%]			
clay	0.92	2.40	0.72
silt	1.15	0.28	0.51
fine sand	71.12	38.83	42.90
medium sand	20.66	58.26	55.79
coarse sand	6.14	0.09	0.09

## Case study Langeoog

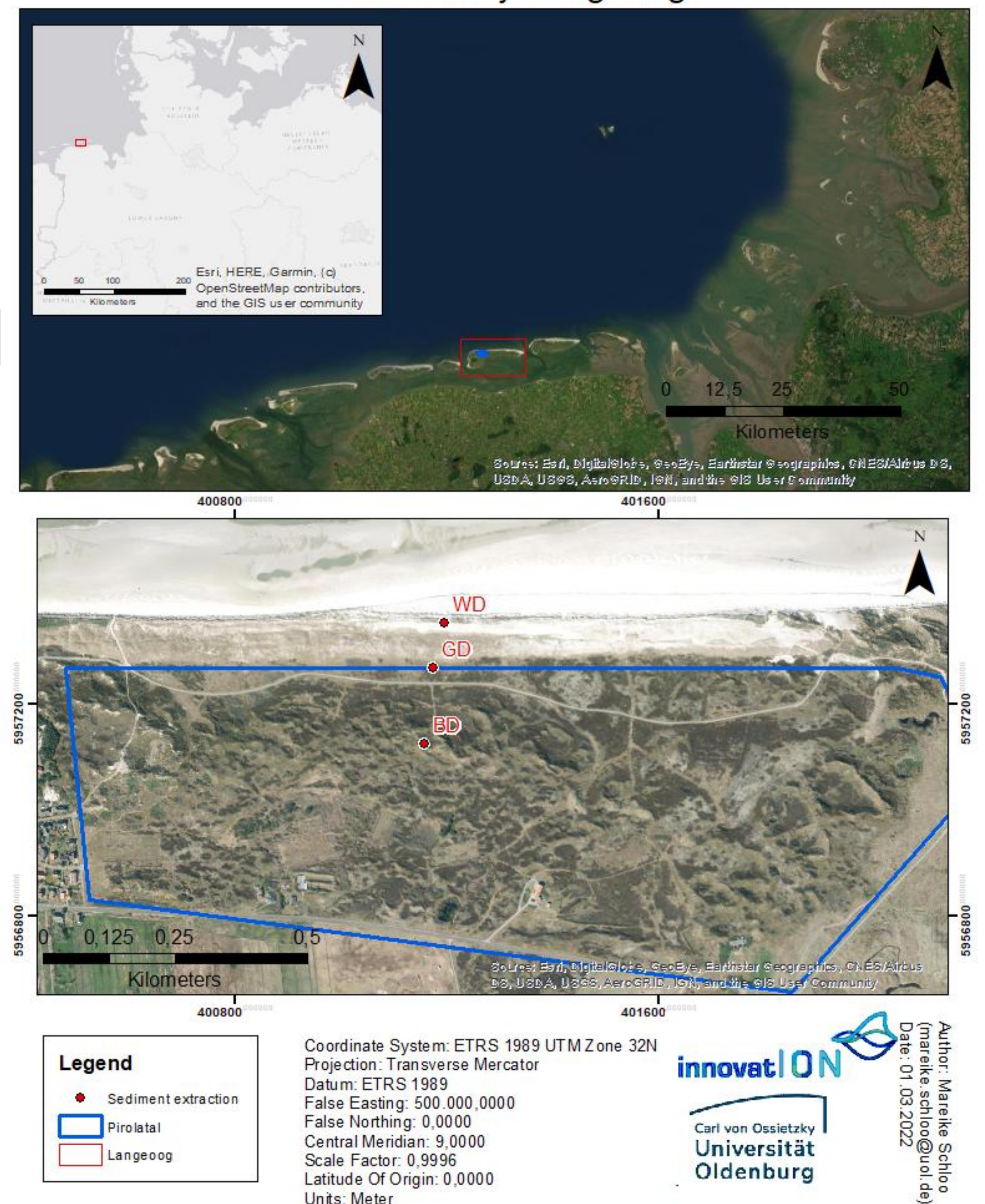


Fig. 1: Satellite picture of Langeoog and sample location.

## Results and discussion

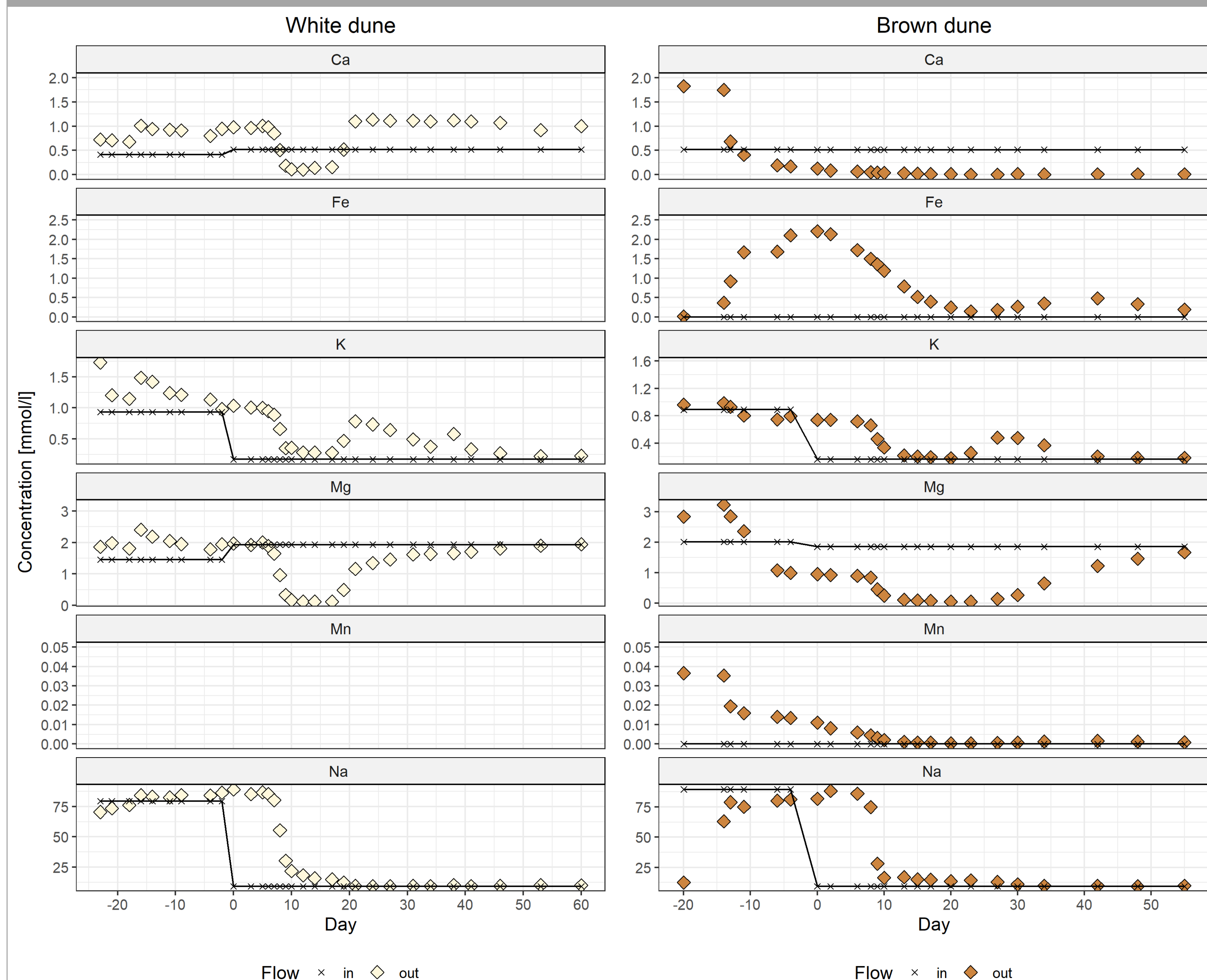


Fig. 2: Concentration of the cations during conditioning phase and changing water type infiltration (Day 0).

- PDW infiltrated from day 0 → Flushing of the initial pore water in the first ten days

### White dune:

- Release of sodium from day 9 - 17 due to adsorption of calcium, potassium and magnesium, caused by affinity [4]
- potassium and magnesium gradually approach the input concentrations
- Calcium release around 50% higher than input → possibly calcite dissolution

### Brown dune:

- Dissolution of calcium within the first ten days of conditioning
- Possibly adsorption of calcium and magnesium from day -10
- Desorption of iron and manganese
- Longer, but less strong release of sodium (day 10 - 30 compared to WD)

→ **Cation exchange processes are the dominant processes** (comparable to [5] and [6])

### Soil characteristics:

- No calcite dissolution measurable by carbonate content in sediment after PDW infiltration
- Short term mineral dissolution plays a minor role in these sediments
- pH increase in the brown dune sediment after PDW infiltration can be attributed to the exchanges of calcium and magnesium against acid-acting cations (e.g., H<sup>+</sup>) [7]

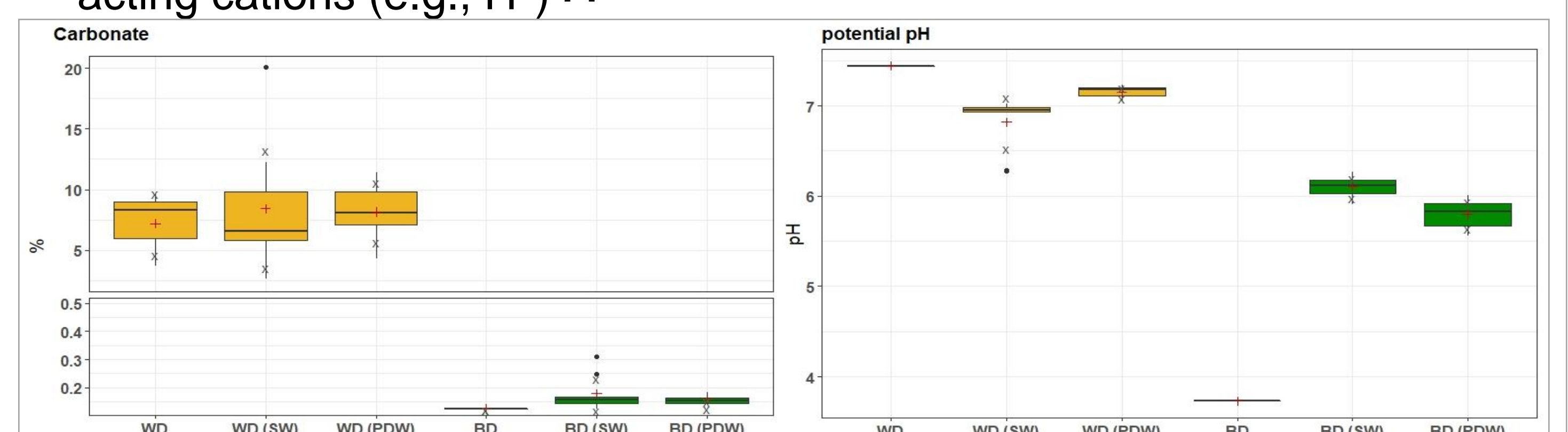


Fig. 3: Soil characteristics (carbonate, pH) of the white and brown dunes before (WD, BD) and after the experiment ((WD (SW), WD (PDW), BD (SW), BD (PDW)) differentiated according to the infiltrating water type .

## Outlook

- Analysis of trace elements might be essential
- Modelling is important for further process understanding
- Determination of potential influence of PDW infiltration on sediment characteristics

## References:

- [1] Barckhausen, J. 1969. Entstehung und Entwicklung der Insel Langeoog. Beitr. zur Quartär-Geologie u. -Paläogeographie e. ostfries. Küstenabschnittes, Uden forlag.
- [2] Houben, G., Koeniger, P., Süßenfuß, J. 2014. Freshwater lenses as archive of climate, groundwater recharge, and hydrochemical evolution—Insights from depth-specific water isotope analysis and age determination on the island of Langeoog, Germany. Water Resources Research, 50 : 8227–8239.
- [3] Seehausen, L., Freund, H., Iturrizaga, L. 2011. Entwicklung der künstlichen Dünen im Pirolatal auf Langeoog – sedimentologische und vegetationskundliche Untersuchungen.
- [4] Appelo, C. a. J. 2013. Geochemistry, groundwater and pollution, Boca Raton u.a.: CRC Press u.a.
- [5] Ronen-Eliraz, G., Russak, A., Nitzan, I., Guttman, J., Kurtzman, D. 2017. Investigating geochemical aspects of managed aquifer recharge by column experiments with alternating desalinated water and groundwater. Science of The Total Environment, 574, 1174–1181.
- [6] Vandenbohede, A., Van Houtte, E., Lebbe, L. 2009. Water quality changes in the dunes of the western Belgian coastal plain due to artificial recharge of tertiary treated wastewater. Applied Geochemistry - APPL GEOCHEM, 24, 370–382.
- [7] Yan, F., Mengel, K., Schubert, S. 1996. Erhöhung des Boden-pH Durch Decarboxylierung Organischer Anionen. In: Merbach, W. (ed.) Pflanzliche Stoffaufnahme und mikrobielle Wechselwirkungen in der Rhizosphäre: 6. Borkheider Seminar zur Ökophysiologie des Wurzelraumes. Wissenschaftliche Arbeitstagung in Schmerwitz/Brandenburg vom 25. bis 27. September 1995. Wiesbaden: Vieweg+Teubner Verlag.